

# ERUSD District LCAP Committee

Monday, May 4, 2015



# Today's Objectives

- ◆ To review district LCAP metrics to inform annual update/revision.
- ◆ To review and discuss student focus group data.
- ◆ To review Annual Update Components



# Achieving Effective Collaboration

## Standard Ground Rules

- ◆ Start on time; end on time.
- ◆ Silence electronic devices.
- ◆ Adhere to the agenda.

## Group Norms

- ◆ One person speaks at a time.
- ◆ No sidebar conversations.
- ◆ Respect other opinions.
- ◆ Be solution-focused.
- ◆ Stay positive!
- ◆ Students first.

# LCAP Committee Overview

## Objective

- ◆ Over the course four meetings, the Committee will refine a series of action recommendations to increase student success at ERUSD.
- ◆ These recommendations will be presented to the Superintendent and the Board of Education as the proposed “guiding principles” for the Local Control Accountability Plan, a critical part of California’s new educational funding system.
- ◆ With the Board serving as the official governing entity, the Committee will act as an advisory body to it.

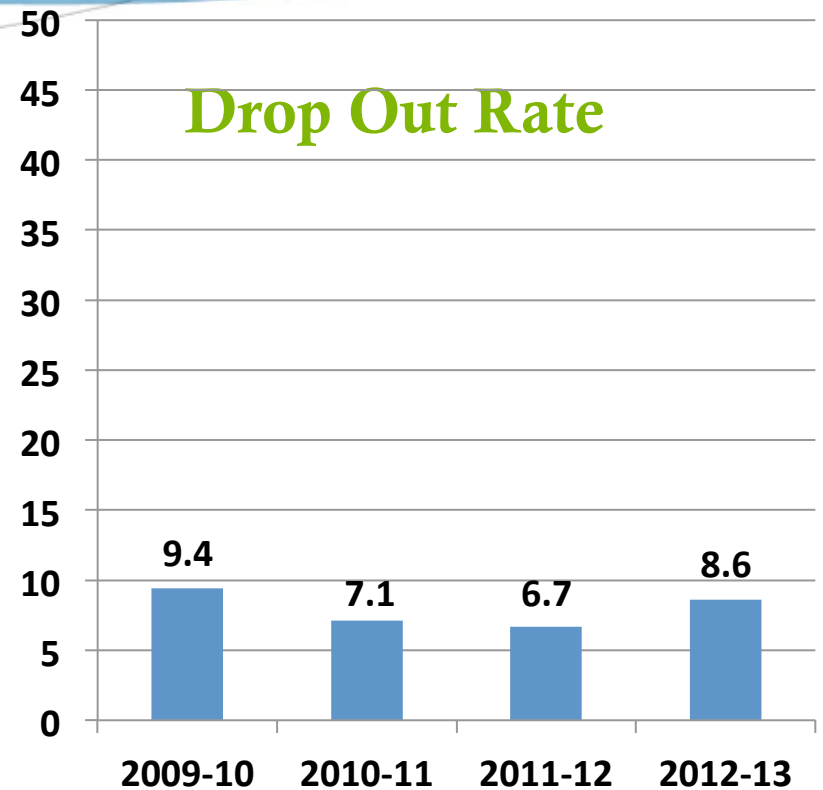
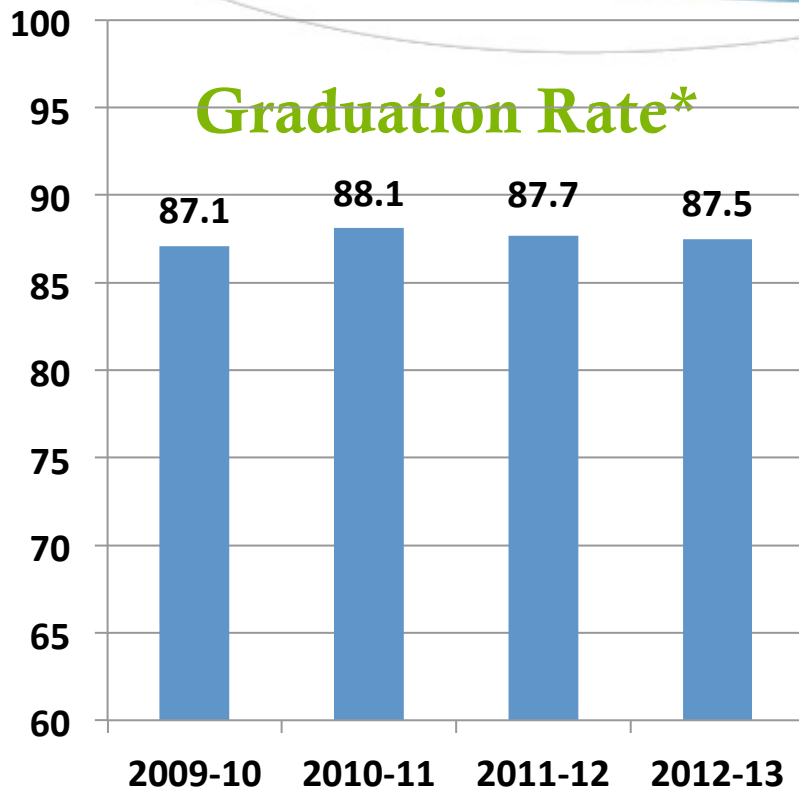
## Tasks

- ◆ Establish a common understanding of the committee process and LCAP.
- ◆ Review LCAP metrics and stakeholder input.
- ◆ Review and evaluate action items and complete Annual Update/ Revision.
- ◆ Prepare for presentation to Parent Advisory Councils and the School Board.

# ERUSD Data Review Continued



# ERUSD Graduation & Drop Out Rates



*\*4-Year Cohort Rate; 90% Target; 2012-13 latest available*

# ERUSD Graduation Rates\*

**ERUSD: 87.5%** (*California: 80.2%; LA County: 77%*)

Hispanic	87.3%
Socioeconomically Disadvantaged	87.1%
English Learners	73%
Special Education	58.2%

*\*4-Year Cohort Rate; 90% Target; 2012-13 latest available*

# 12<sup>th</sup> Grade Graduates Completing UC/CSU Required Courses (A-G)

	2009-10	2010-11	2011-12	2012-13	2013-14
<b>ERUSD</b>	<b>37.7%</b>	<b>39%</b>	<b>42%</b>	<b>52%</b>	<b>59%</b>
LA County	43.0%	38.2%	39.6%	39.2%	42.4%
California	36.3%	36.9%	38.3%	39.4%	41.9%



# CAHSEE Passing Rate – Grade 10

	2012	State Avg.	2013	State Avg.	2014	State Avg.
<b>Math</b>	<b>85%</b>	84%	<b>82%</b>	84%	<b>82%</b>	85%
<b>ELA</b>	<b>82%</b>	83%	<b>82%</b>	83%	<b>82%</b>	83%

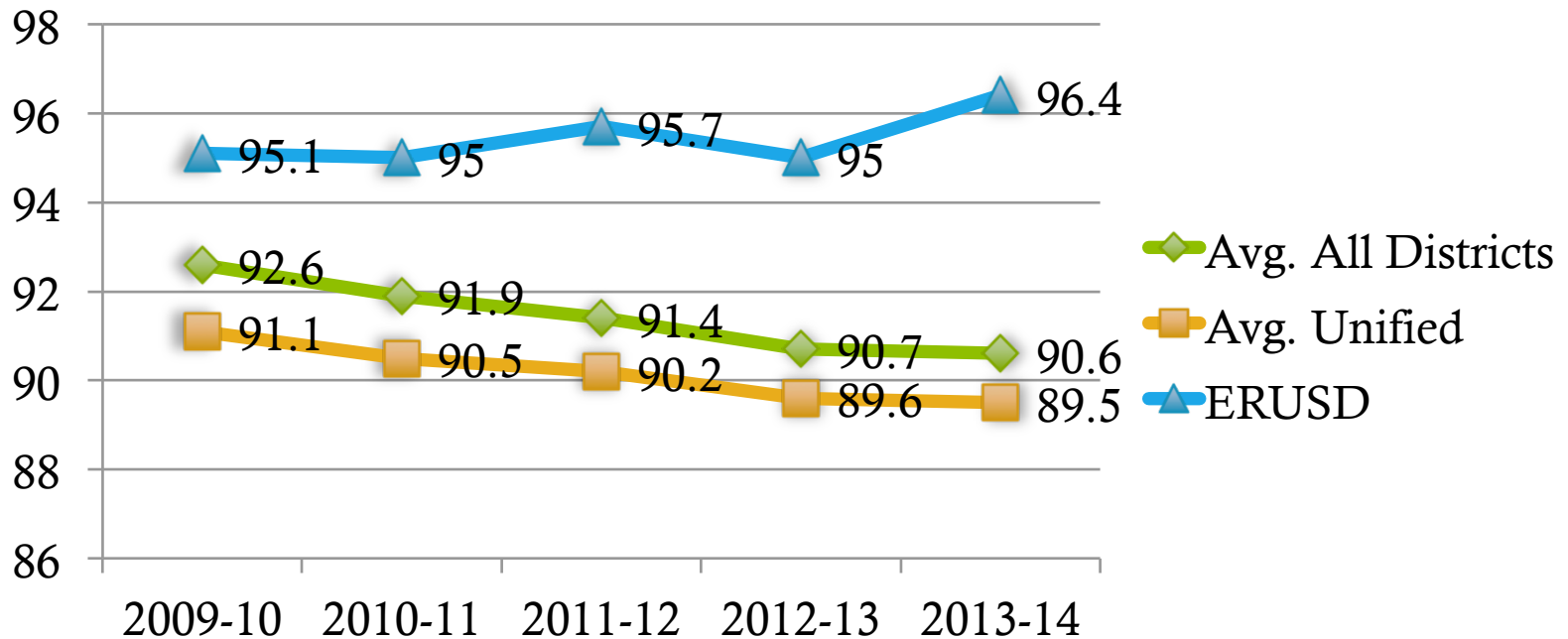
# Let's Talk!



- ◆ How can ERUSD help more students to graduate from high school?

# ERUSD

## ADA/Enrollment Trends



**Current ERUSD Student Enrollment as of :**

# ERUSD Student Discipline Trends

Suspension Totals						
	2009-10	2010-11	2011-12	2012-13	2013-14	2014-15
<b>Elementary</b>	2,080	451	393	289	60	70
<b>Middle School</b>	1,011	824	441	470	45	169
<b>High School</b>	745	884	543	1,154	66	195
<b>SEBS</b>	8	12	18	12	4	5
<b>Total</b>	3,844	2,171	1,395	1,322	175	439

# ERUSD Student Discipline Trends

Expulsions						
	2009-10	2010-11	2011-12	2012-13	2013-14	2014-15
<b>Suspended Expulsions</b>	23	29	15	12	4	3
<b>Alternative Education</b>	17	22	10	9	4	1
<b>Total</b>	40	51	25	21	8	4

# Let's Talk!



- ◆ How can ERUSD help more students to attend school regularly?

# Student Focus Groups

Elementary, Middle School, High School



# What 3 things made learning exciting this year?

- ◆ Hands-on Learning – Science Experiments
- ◆ Project-Based Learning – Choice in Projects
- ◆ Working in Groups
- ◆ Field Trips
- ◆ Technology Access/Online Programs & Apps
- ◆ Rewards/Incentives



# What improvements would you suggest for your school?

- ◆ More Projects
- ◆ Increased Technology
- ◆ More Recess/PE Equipment
- ◆ More Activities Outside Classroom/Field Trips
- ◆ Increase Challenge in Class
- ◆ More Chapter Books/Books of Interest in Library
- ◆ More Activities – Enrichment, Sports, Clubs
- ◆ More Electives

# Do you feel your school is preparing you for college & career?

- ◆ Elementary – Visible Gap
  - ◆ College T-shirt Days
  - ◆ Career Day
  - ◆ Teachers share about the Importance of College
- ◆ Middle School – Stronger with College than Career
  - ◆ CCGI
  - ◆ AVID
  - ◆ Career – Limited to Engineering
- ◆ High School – Communication & Access

# Revised LCAP 2014-15

SECTION 1: STAKEHOLDER ENGAGEMENT

SECTION 2: GOALS, ACTIONS, EXPENDITURES,  
AND PROGRESS INDICATORS



ANNUAL UPDATE

SECTION 3: USE OF SUPPLEMENTAL AND  
CONCENTRATION GRANT FUNDS AND PROPORTIONALITY

# Annual Update

- ◆ Update is completed for each goal in conjunction with the next year's LCAP
- ◆ Gather data on actions and services that are being provided to share with stakeholders
- ◆ Review data as measured by **required** and **locally** determined metrics



# Annual Update Must Include:

- ◆ All information carried forward from each goal in the approved 2014-15 LCAP.
- ◆ Actual annual outcomes based, at a minimum, on the state required metrics.
- ◆ An assessment of the effectiveness of the specific actions as part of the review of progress.  
*(internal)*

# Annual Update Includes:

- ◆ A description of all actual services provided in the current year, including actual estimated expenditures.
- ◆ Any changes to the scope of services or subgroups served in the Annual Update.
- ◆ Any planned changes to goals, actions and services for the coming year.

# Next Steps...

- ◆ Begin review of actions status for annual update/revision.
- ◆ Review Online Survey data
- ◆ Q & A
- ◆ Next Meeting: Monday, May 18, 2015

